

**TagFaster Automatic Applicator: Instructions of Use**  
Compatible with:

**ROXAN**  
**TagFaster**

Instructional Videos on YouTube 



TagFaster Twin Tags



TagFaster Single EID



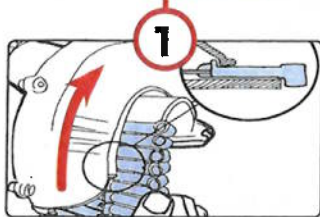
TagFaster Non-EID



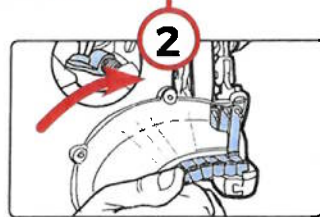
TagFaster Replacements



**LOADING**

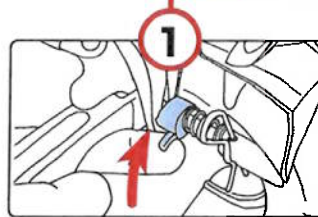


**1** Insert tag strip with pins and tag ridge by feed horn.

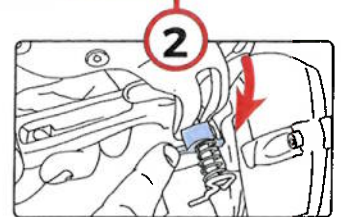


**2** Push tags to "stop" to lock into place.

**UNLOADING**

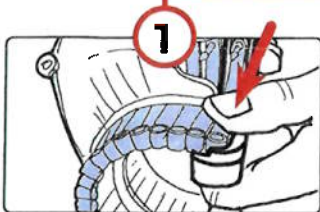


**1** Change tag strip if required, pull tab up and slide tags out.

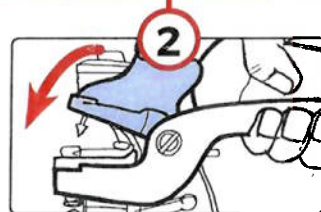


**2** Remember to return tab to its original position.

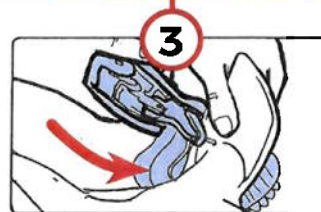
**TAGGING**



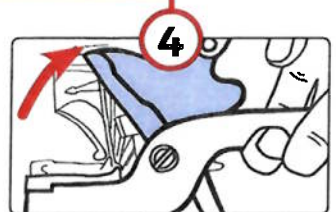
**1** Press down on tag to align it within the hammer.



**2** Squeeze applicator half way to prime for tagging.



**3** Roll the applicator forward as you pierce the ear to keep the pin vertical.



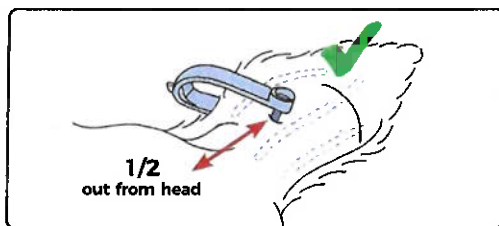
**4** Fully and sharply release the handle to feed next tag.

**We manufacture tags to the highest standards however successful identification is also achieved by paying particular attention to where and how the tag is applied.**

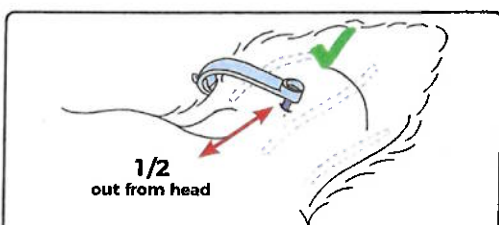
The following information contains general advice and industry guidance on applying tags.

- The law does not set out which ear you should use for tagging, but industry representatives have recommended that the left ear of the sheep or goat should be used wherever possible.
- Make sure your operator is properly trained and competent.
- Think carefully about the best type of tags for your animals. Use a suitable style and size of tag we approved for the breed, size & age of the animal.
- Make sure the tag is fitted correctly by following the manufacturer's instructions and use the correct pliers/applicator for the model of tag you are fitting.
- Make sure the animal's head is secure to prevent jerking during tagging.
- Apply tags under hygienic conditions. Make sure the ear, tag and applicator are clean. You may want to consider using disinfection to clean your equipment and the area you are tagging in. You may also want to consider using an insecticide on your animal, but you must take care to follow the instructions for each product used so that you meet health and safety regulations and avoid residues in meat or milk. Check that the chemical you are using does not remove the print on the tag.
- The tag should be placed through the ear, avoiding the main blood vessels and ridges of cartilage. Remember to allow for growth when fitting loop tags.
- Fit tags in cool weather (where possible) to reduce 'fly strike' and infections.
- When fitting two-piece plastic tags, always make sure the male part of the tag is fitted from the back of the ear as centrally as possible. After inserting the tag, the female part of the tag should be on the inside of the ear.
- Store unused tags in a clean container.

**BEST TAGGING PRACTICE**  
**Young Lamb:** Leave Space for ear growth.



**BEST TAGGING PRACTICE**  
**Older Lamb:** Allow for any further ear growth.



Feedback forms and advice on best tagging practice can be obtained from:  
**DEFRA** - <https://www.gov.uk/government/publications/eartag-feedback-form-for-sheep-and-goat-keepers>

**DAERA** - <https://www.daera-ni.gov.uk/publications/ear-tag-performance-form>